



RECP #: 754587

RECORDED 6/5/2019 AT 3:33 PM BK# 2624 PG# 256  
Debra K. Lee, CLERK OF LARAMIE COUNTY, WY PAGE 1 OF 1

# STATE OF WYOMING CORNER RECORD

(In compliance with the CORNER PERPETUATION AND FILING ACT, Wyoming Statutes, 1997 Section 33-29-140, et. seq., and the Rules and Regulations of the Board of Registrations for Professional Engineers and Professional Land Surveyors)

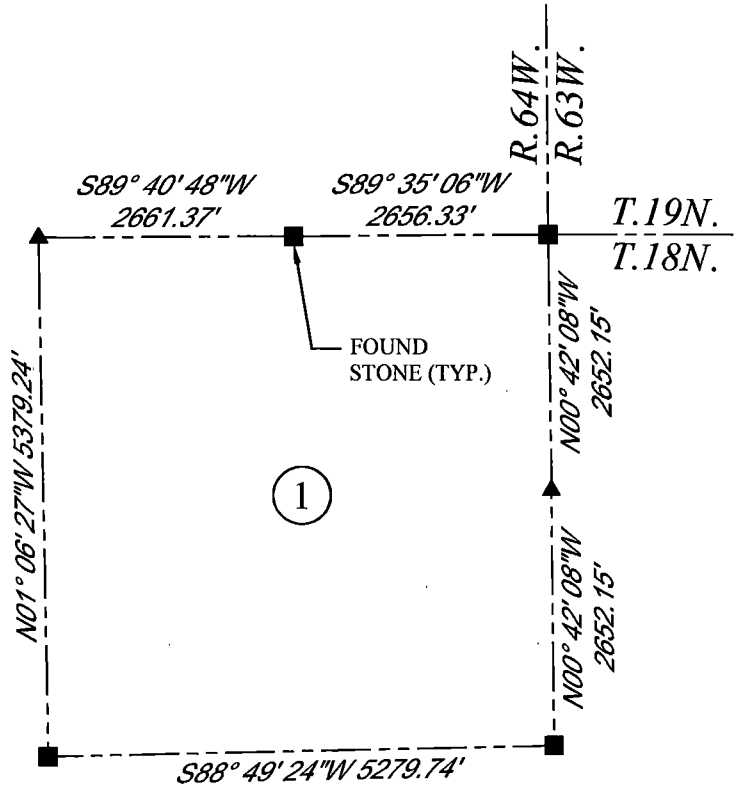
## NORTH QUARTER CORNER SECTION 1, T. 18 N., R. 64 W., 6TH P.M., LARAMIE COUNTY, WYOMING

**GLO:** SET A GRANITE STONE 15X10X6, 10 IN. DEEP MARKED 1/4 ON THE NORTH FACE FOR 1/4 SEC. COR.  
**FOUND:** A SET GRANITE STONE, APPROXIMATELY 13X11X6.



SCALE: NONE  
NORTH DETERMINED BY  
G.P.S OBSERVATIONS

FOUND GRANITE STONE.



### LEGEND:

- FOUND BLM CAP
- FOUND USFS CAP
- FOUND STONE
- FOUND PRIVATE MONUMENT
- ◆ CALCULATED POSITION
- ▲ SET MONUMENT (LS10245)
- SECTION LINE

DATE OF FIELD WORK: 4/15/2019 OFFICE REFERENCE: MERIDEN

### CROSS INDEX DIAGRAM

A	1	2	3	4	5	6	7	8	9	10	11	12	13	14	15	16	17	18	19	20	21	22	23	24	25
B																									
C		6		5		4		3		2		1													
D																									
E																									
F																									
G		7		8		9		10		11		12													
H																									
J																									
K																									
L		18		17		16		15		14		13													
M																									
N																									
O																									
P		19		20		21		22		23		24													
Q																									
R																									
S																									
T		30		29		28		27		26		25													
U																									
V																									
W																									
X		31		32		33		34		35		36													
Y																									
Z																									

WOOD  
2615 AVIATION DRIVE  
SHERIDAN, WY 82801  
PH: 307-675-6400

**wood.**

THIS CORNER RECORD WAS  
PREPARED BY ME OR UNDER  
MY DIRECTION AND  
SUPERVISION,  
SEAL AND SIGNATURE

